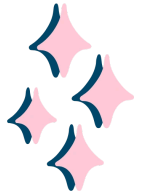
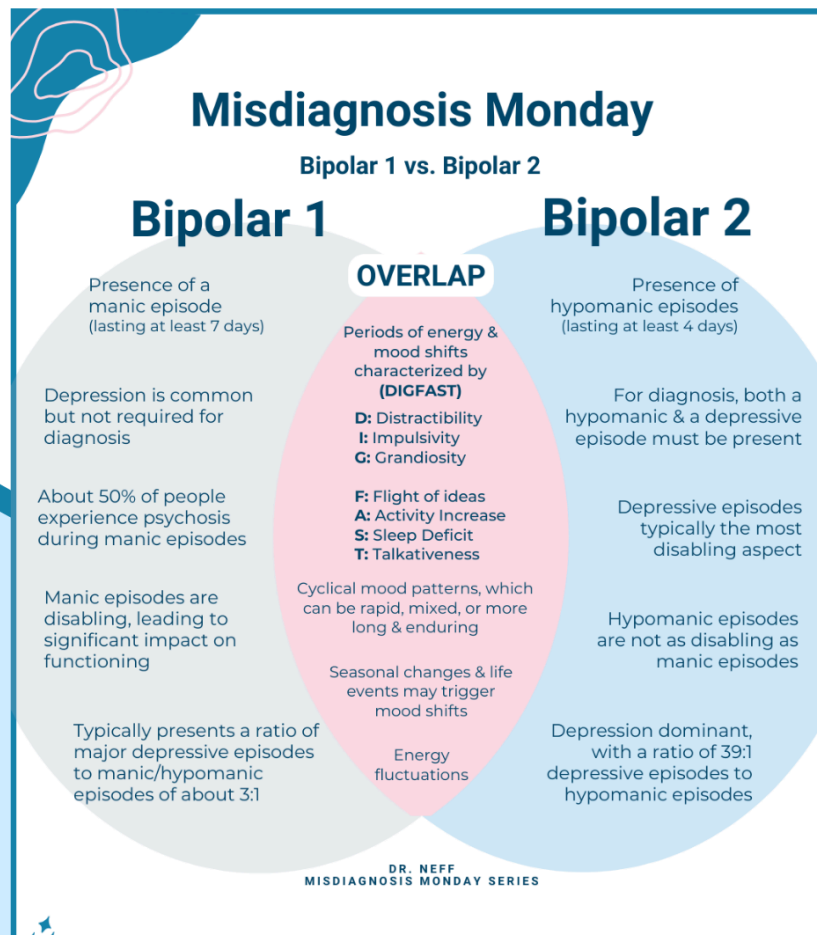




# Misdiagnosis Monday



# New Venn Diagram: Bipolar 1 vs. Bipolar 2

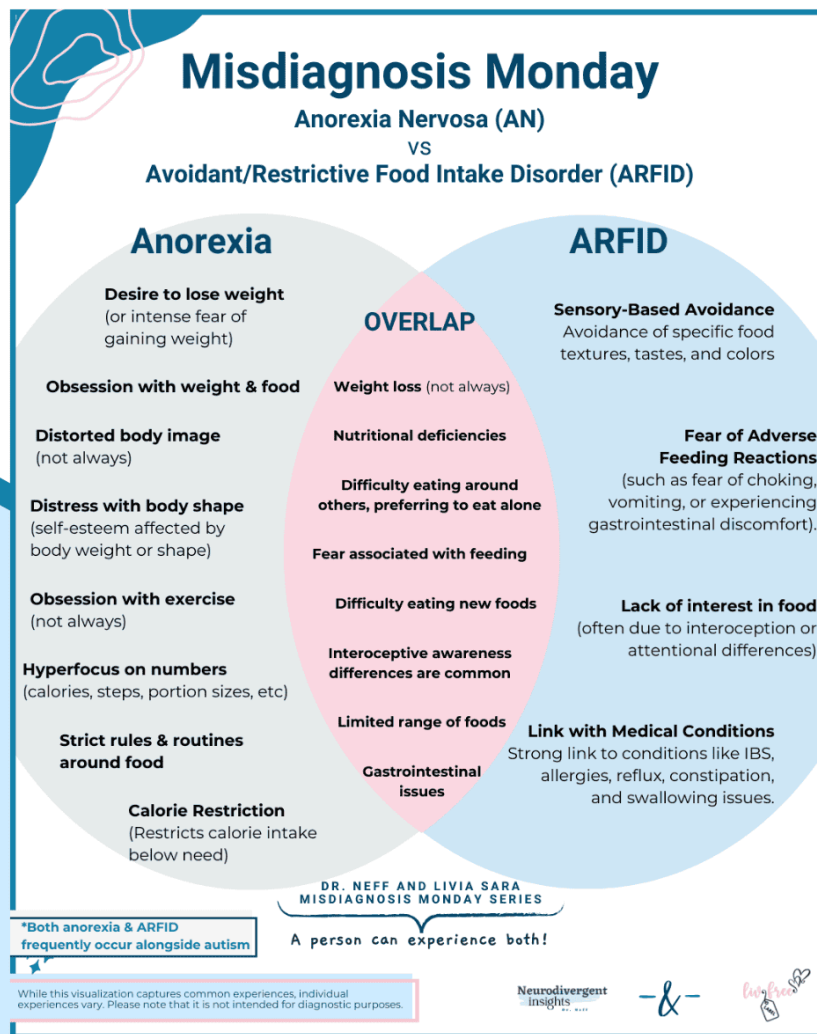


# New Venn Diagram: OCPD vs. OCD



## Exploring OCD vs OCPD and Distinguishing Features

# New Venn Diagram: Anorexia vs ARFID

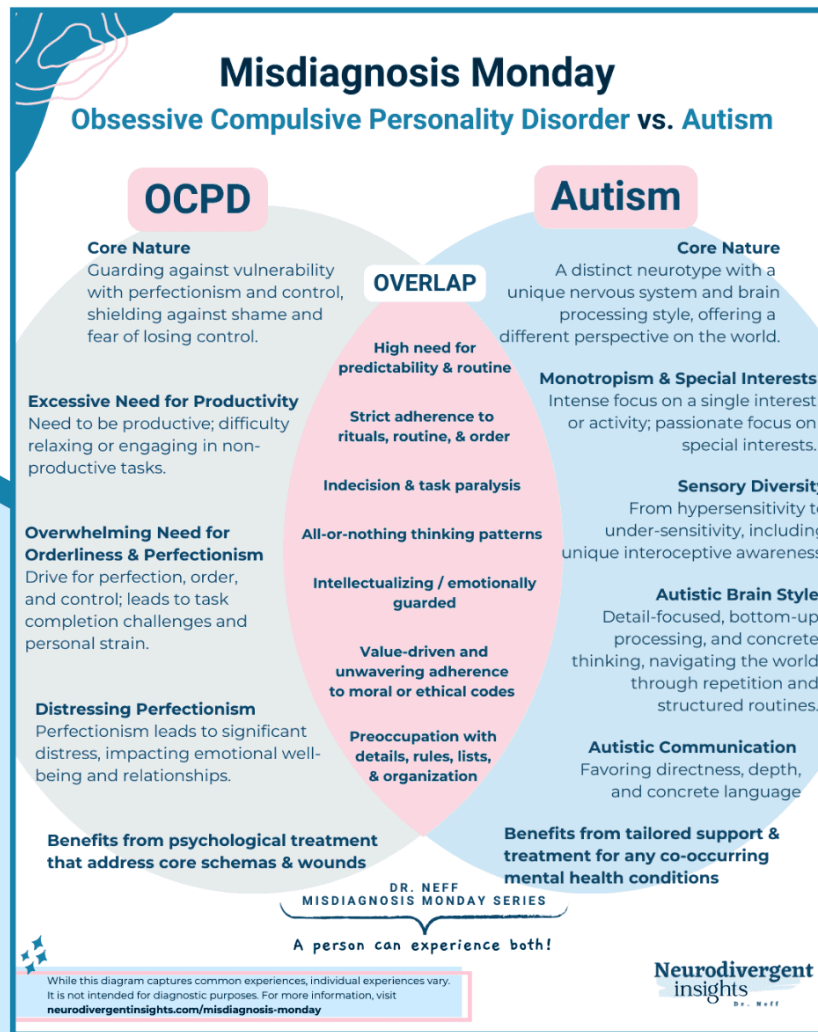


## Anorexia vs. ARFID: Do You Know the Critical Variances?

Eating and feeding disorders, including anorexia nervosa (AN) and Avoidant Restrictive Food Intake Disorder (ARFID), are alarmingly prevalent within the

Read More ➔

# New Venn Diagram: OCPD vs. Autism

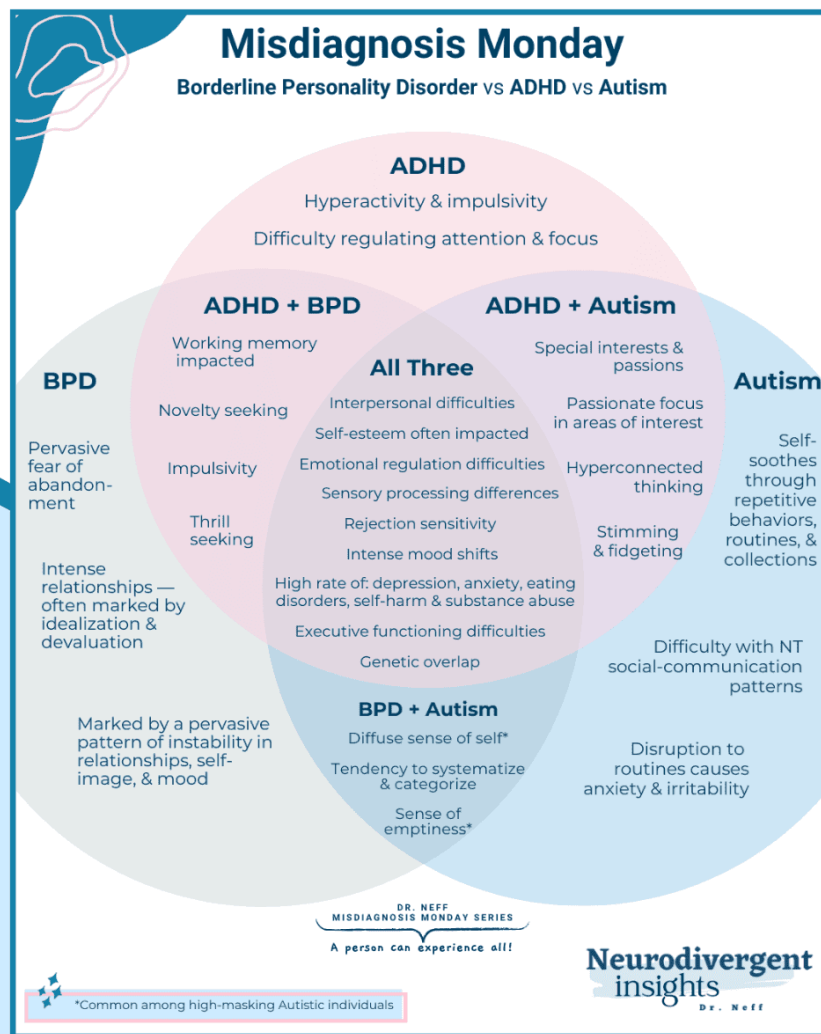


## Obsessive Compulsive Personality Disorder vs. Autism

Obsessive-Compulsive Personality Disorder (OCPD) and its many hidden complexities is somewhat like that eccentric vagabond cousin in the family tree

Read More

# New Venn Diagram: BPD vs. ADHD vs. Autism

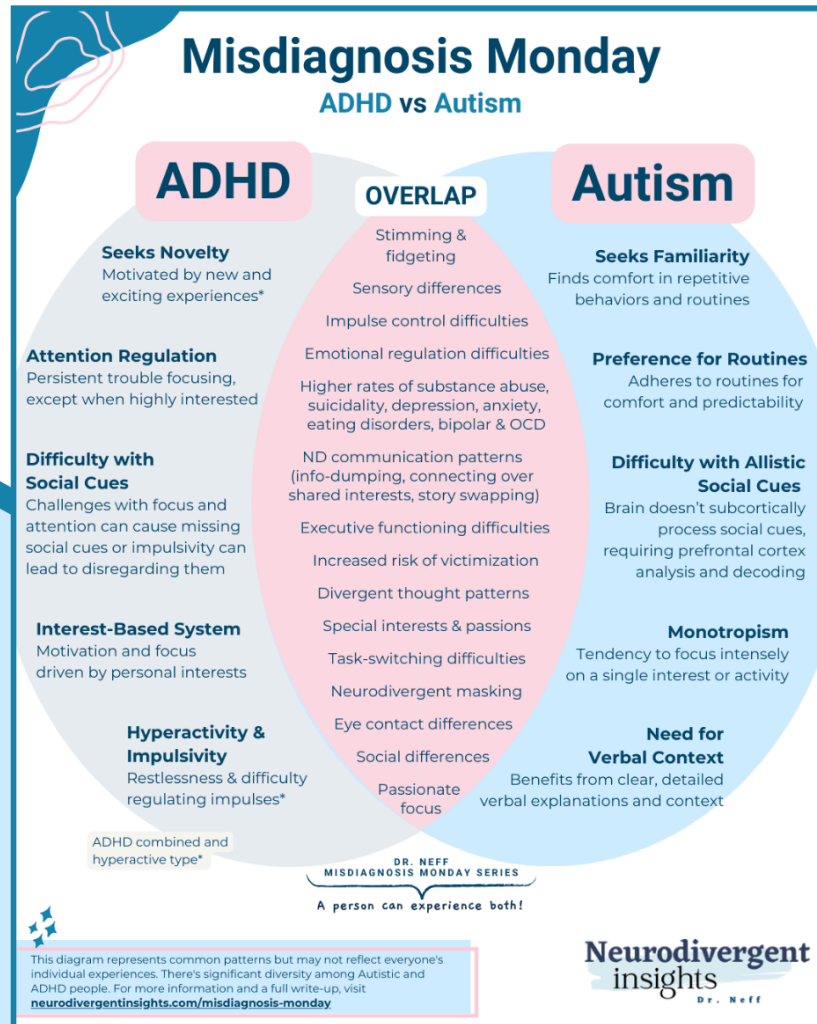


## Borderline Personality Disorder, ADHD, and Autism

Borderline Personality Disorder, ADHD, and Autism The trifecta of Borderline Personality Disorder, ADHD, and Autism paints an incredibly complex picture!

Read More ➔

# New Venn Diagram: ADHD vs. Autism

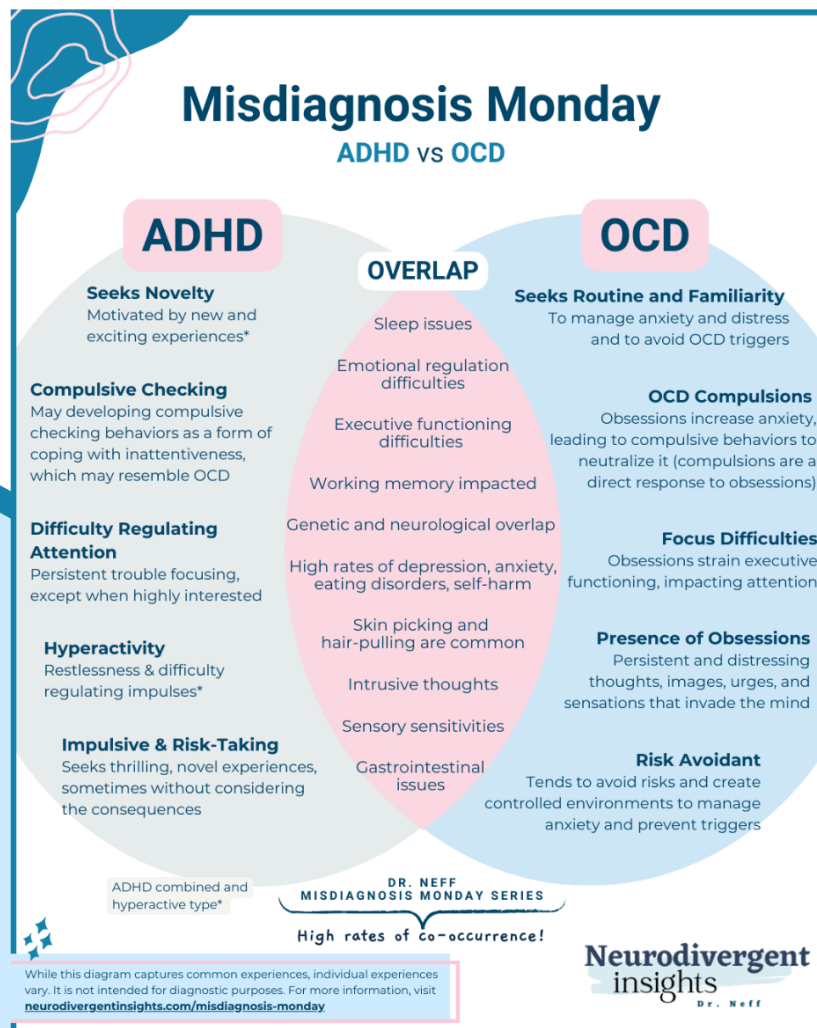


## Is it ADHD or Autism? (Or Both)

Autism and ADHD Overlap Taking on ADHD and Autism has felt like the most daunting diagram to create out of

Read More

# New Venn Diagram: ADHD vs. OCD

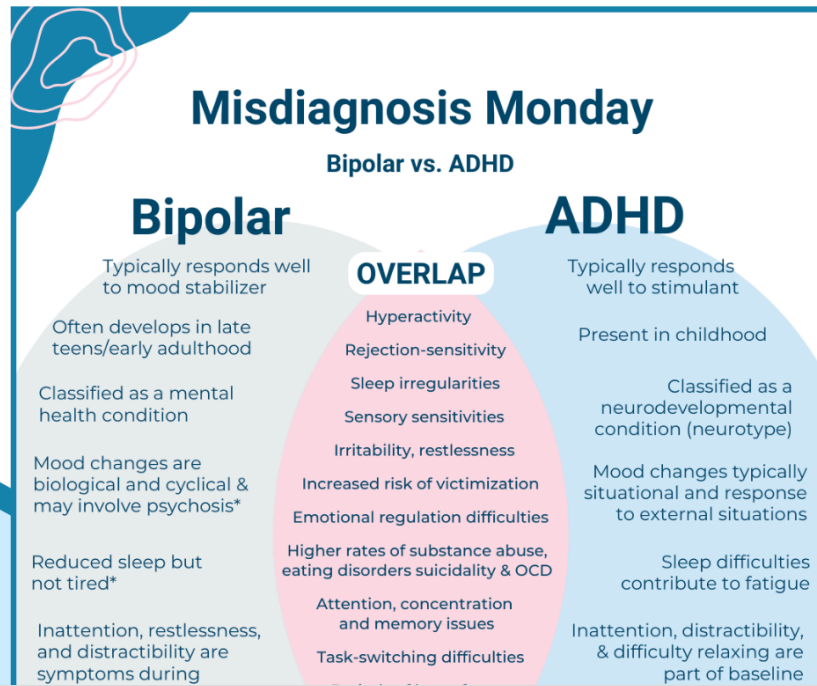


## ADHD vs OCD

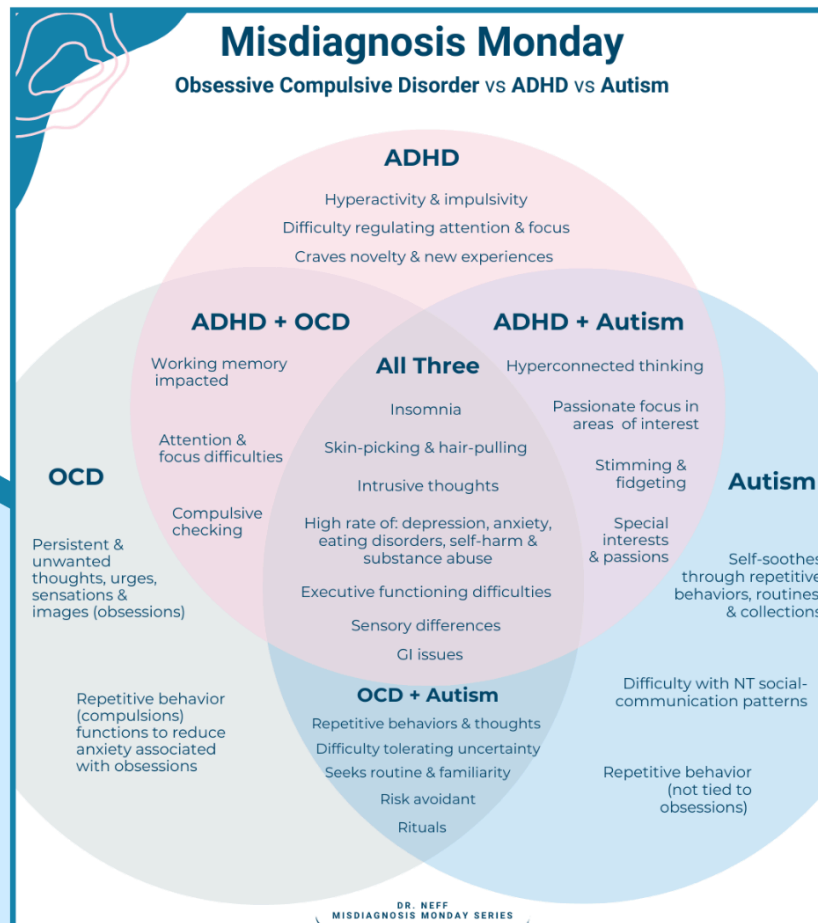
OCD vs. ADHD The conversation about ADHD and OCD is perhaps better situated as an AND conversation rather than a

[Read More](#) 

# New Venn Diagram: ADHD vs. Bipolar



# New Venn Diagram: OCD vs. ADHD vs. Autism



# Misdiagnosis Monday AUTISM

The infographic grid consists of 15 circular panels, each titled 'Misdiagnosis Monday' and comparing a specific condition with Autism. Each panel is structured as follows:

- Unique Features:** A list of symptoms or traits specific to the condition being compared.
- Overlap:** A central section detailing shared symptoms or characteristics between the condition and Autism.
- Core Social Features:** A section highlighting how the condition's presentation might differ from or overlap with the core social features of Autism.

Conditions included in the grid:

- Social Anxiety vs. Autism
- Schizoid vs. Autism
- Schizophrenia vs. Autism
- PTSD vs. Autism
- OCD vs. Autism
- BPD vs. Autism
- Avoidant Personality Disorder vs. Autism
- Bipolar vs. ADHD
- Depression vs. Autistic Burnout
- ADHD vs. Autism
- OCDP vs. Autism
- Obsessive Compulsive Personality Disorder vs. Autism
- ADHD vs. OCD
- ADHD vs. BPD
- ADHD vs. Autism
- PTSD vs. Autism

Each infographic also includes the 'Neurodivergent Insights' logo and a small URL at the bottom.



# Get Access to the Newsletter Resource Vault & 10+ Free PDFs

Subscribe to the Neurodivergent Newsletter for weekly tips and resources.

[Subscribe](#)

## Quick Links

[About Dr. Neff](#)

[Press and Media](#)

[Trainings](#)

[Contact](#)

[Previous customer? Log In Here](#)

## Resources

[Resource Page](#)

[Workbooks](#)

[NDI Directory](#)

## Clinical Resources

[Nuevo! Autismo en español](#)

**Disclaimer:** This website uses affiliate links, meaning: at no additional cost to you, I earn a small commission if you click-through and make a purchase. As an [Amazon Associate](#), I earn from qualifying purchases. I feature products that I believe in. Your support means the world and allows me to host this website. Thank you!



@2025 Neurodivergent Insights by Dr. Megan Neff

